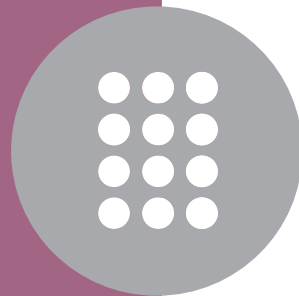




SECURITY TECHNOLOGY CONFIDENCE EXPERIENCE QUALITY SERVICE



Ctra. Nacional II, km 333 Polígono BTV
c/ Tamariz, 9
50171 La Puebla de Alfindén
Zaragoza [Spain]
T +34 976 107 201 • F +34 976 455 578
info@omnitecsystems.com
S omnitecsystems
GPS: N 41° 38.499' W 0° 46.257'

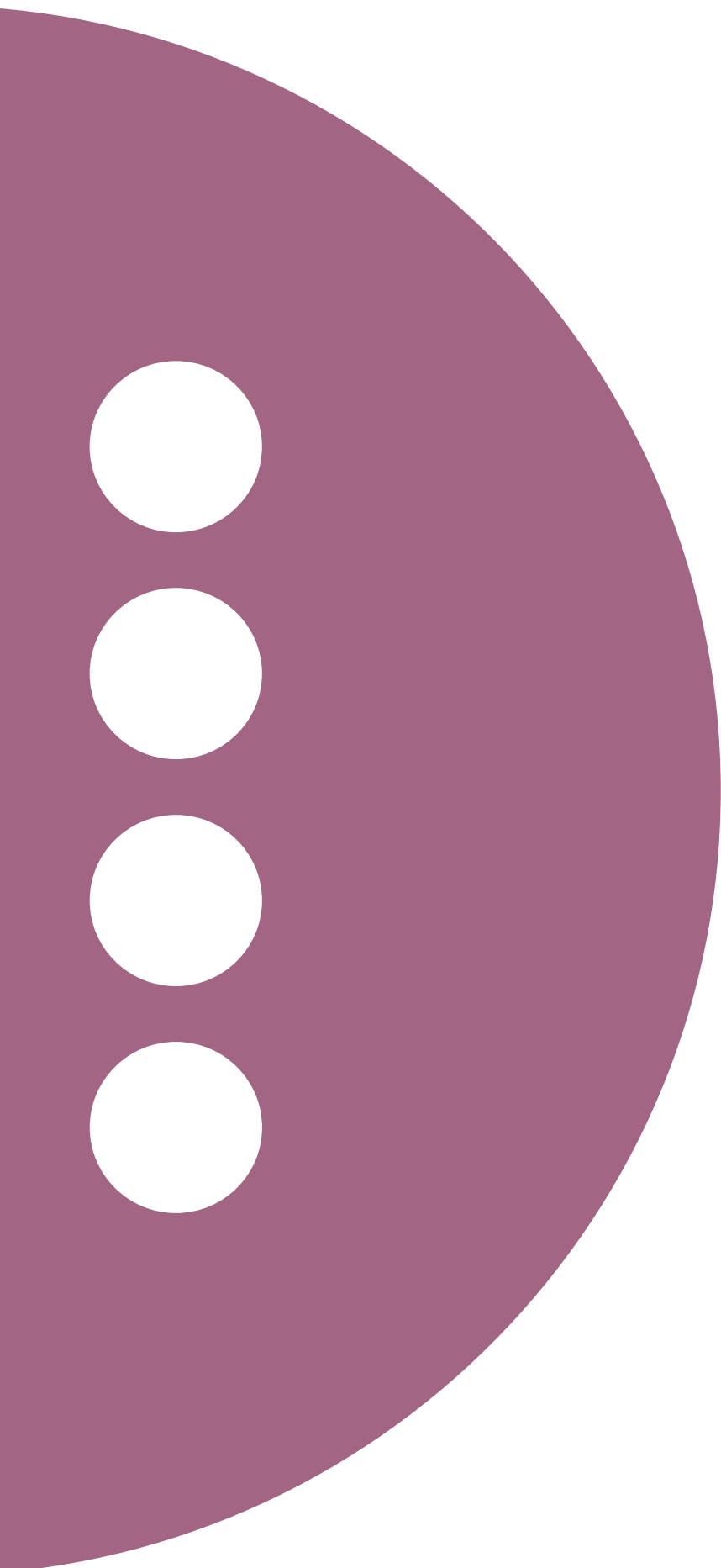


www.omnitecsystems.com



Security and efficiency
in access management





**Electronic
Locks**

think open





think forward

The quality that ensures your customer satisfaction

OMNITEC SYSTEMS has accumulated an experience of more than 25 years developing, manufacturing and commercializing Electronic Locks, Safes and Minibars. Today, **OMNITEC is one of the most recognized brands in the HOSPITALITY sector**, with a guarantee of quality and service on the 5 continents.

A highly specialized team in all areas and a totally market-oriented focus have made it possible for **OMNITEC SYSTEMS** to develop solutions for security and comfort. By connecting this team with the logistics centres in Europe, America and Asia, today we are able to be present in more than 10,000 hotels around the world, including the most prestigious international hotel chains.

Leaps in quality and specialization do not occur by chance. Recent investments in R+D, guaranteed by our knowledge of the market, have led to **OMNITEC SYSTEMS** being at the forefront of the sector today.

OMNITEC locks and access control for hotels are the result of our company's specialization and orientation in a single direction - the hotel. Today, our name is synonymous with quality, reliability, security and service, with the best quality/cost ratio on the market.

technologies for managing access control

The **OMNITEC** range of locks and access controls meet the security standards required in hotels, at both the mechanical and the electronic level, so that hotels can guarantee that guests can feel at home.



- **Anti-panic systems** that allow emergency entry or exit, regardless of the privacy status of the door
- **Anti-card systems** that prevent undesired entries using unconventional methods
- **Automatic latch projection systems** to provide additional security
- Electronic or mechanical privacy with **room occupied indicator**



- Hidden auditable mechanical cylinder to perform **emergency openings** that will be registered in memory
- **Encrypted recording of data** on the identification media
- **Tropicalized electronic circuits** and mechanical systems manufactured in stainless steel to guarantee their operation, even in the most extreme climates

electronic locks OMNITEC

technologies of
communication
and identification



- **mifare proximity (13.56 mhz)**
- **nfc (near field communication)**
- **ble (bluetooth low energy)**
- **wireless ieee 802.15.4 - 2.4 ghz**

ACTIVA system

Based on recent investments in R+D, OMNITEC has developed the **innovative access control system ACTIVA**, which provides additional security and control unprecedented in hotels, using the most innovative systems of communication and identification.



NFC (near field communication)

OMNITEC has been the first manufacturer worldwide to offer a real NFC experience; it is the only totally secure technology that smartphones can incorporate.

Employees and customers can directly obtain on their Smartphone credentials for access, revocation of permissions, etc., taking hotel security to limits that were, until now, unattainable.

BLE (bluetooth low energy)

As an alternative for all those guests who do not have NFC on their Smartphone, ACTIVA also allows the SYN lock to be opened via BLE. BLE provides security, simplicity and very low consumption, and is additional interconnectivity for the Activa system.

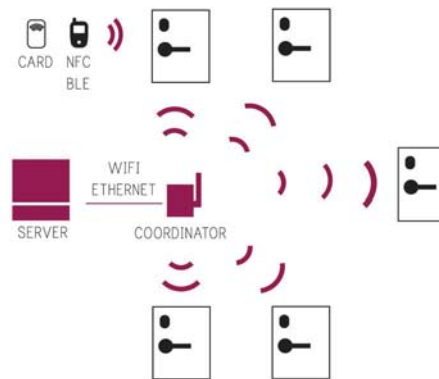
WIRELESS IEEE 802.15.4 - 2,4 GHz

An internal wireless network in the hotel, secure and inaccessible to third parties, among lot of options, allows real-time monitoring of entries, checking of the battery status and management of the permissions held by the different users.

Incorporates IEEE 802.15.4 - 2.4 GHz wireless technology for wireless online functionalities and OTA (Over The Air) updating of the product.

VANGUARD

Maximum performance and efficiency for hotels, guests and employees



- **Multi-user license** valid for a Windows environment
- **Secure MySQL data base**, notably increasing security and speeding up remote secure access to it for technical assistance. Optional installation on Omnitec Server
- **100% compatible** with any PMS on the market (Opera, Prestige, etc.)
- Single identifier per installation or group of installations, limiting the use of cards that are not coded by the authorized devices
- Different levels of access for the different users of the system
- Management and access control by guests and employees
- **BACKUP System** in order to issue new credentials for new guests in case of computer problems
- **HOSTEL Option**, for shared use of rooms by different guests, with independent check-in and check-out dates
- **MOTEL Option**, limiting the use of the lock by hours
- Direct access to the on-line assistance website
- **REVALIDATOR**: Our system is capable of managing credentials by the hour or day/s. After the indicated period, it is necessary to revalidate their user permissions with the OMNITEC Revalidator in order for the card to continue to be operational. The device can be installed near a door or controlled passage by which, at the same time it revalidates the user permissions, it grants access to the user, speeding up and securing the process and the security of the hotel to the utmost

The most secure wireless access technology in the world, which, thanks to the **OMNITEC APP's**, will take the hotel to a new dimension and where control units, cables and connectors exposed to tampering by third parties can be forgotten.

The **ACTIVA management system** and the **SYN lock** have **two functional APPs** which make it possible to obtain maximum performance from the installation, both for the hotel and for the guest. These two APPs differ, depending on the user: for the guest, the **ACTIVA KEY APP** is available, and for the hotel and its employees, the **ACTIVA TASKS APP**.

Used by guests with their own Smartphone, the **ACTIVA KEY App** allows automatic check-in and direct access to the room after confirming the availability of their access credentials on their Smartphone.

ACTIVA KEY APP lets the guests openings via NFC (Activa Key NFC) and via BLE (ACTIVA KEY BLE), availables in APP Stores IOS and Android.

Confirmation of Booking → Auto Check-in → Access Credentials → Access to the room

The **ACTIVA TASKS App** has been developed to **be used by** both internal and external **hotel personnel**. Common operations such as the initialization of locks, audit trail reports, battery status check, changes of access plan, emergency openings, etc. are possible by simply positioning the NFC smartphone or tablet near the SYN lock.

Another innovative aspect is the **management of access permissions associated with specific tasks**. These tasks are received on the employee's Smartphone and, once the task is finalized, the access credentials of said task expire and the system reports the task as finalized.

SYN electronic lock

OMNITEC combines Design, Technology and Innovation to present the most advanced and revolutionary electronic hotel lock on the market, which incorporates the innovative ACTIVA access control system, providing additional security and control unprecedented in hotels.



INNOVATION

Its minimalist and customizable design and management via APP / Wireless make SYN a lock with unprecedented features



- **Innovative**, incorporating the most advanced technology at the service of hotels and their needs
- **Minimalist** thanks to its innovative design. Totally customizable, allows the possibility of choice of any handle to adapt it to the decorating style
- **Revolutionary**, mechanical parts, electronics and battery located inside the door, facilitating installation and providing the system with maximum security and absolute resistance in adverse environmental and climatic conditions

- **Maximum security** with features such as auto-latch, user-configurable electronic privacy, automatic and controlled canceling and deleting of lost cards, control rounds function, mechanical lock with masterkey, etc. 256 bit encryption and a secure management of the installation by server and software that allows configuration of security and user levels, for users and employees, including functions of revalidation of online accesses.
- **Non-volatile memory** with capacity to register up to 5000 events that can include openings, attempts to open, exits, etc.

SMARTPASS system

At OMNITEC we have developed **SMARTPASS**, a platform that encompasses electronic locks, access controls and energy savers, managed with SmartPass software, wireless controller and MiFare cards, in order to cover the needs and requirements of any type of hotel establishment, **guaranteeing internal security and control.**



IDENTIFICATION TECHNOLOGY

MIFARE PROXIMITY (13.56 Mhz)

OMNITEC locks use the **MIFARE** (13.56 Mhz) identification system, the most widely-used, and at the same time, the most secure technology, allowing very simple and quick integration with other market applications.

The medium on which the access credential is held can have multiple formats, and always adapted to the needs of the hotel: cards, key holders, bracelets, all-inclusive bracelets, etc. These can all be carried openly and don't confine the user, which finally translates into significant cost savings.



SECURITY
CONTROL
PEACE OF MIND

SMARTPASS SOFTWARE

Of the different systems that **SMARTPASS** encompasses, the most common one and with highest level of implementation at the international level is the management software, which offers:

- **Multi-user license** valid for use under a Windows environment
- **Secure MySQL data base**, notably increasing security and speeding up remote secure access to it for technical assistance. Optional installation on Omnitec Server
- **100% compatible** with any PMS on the market (Opera, Prestige, etc.)
- Single identifier per installation or group of installations, limiting the use of cards that are not coded by the authorized devices
- Different levels of access for the different users of the system
- Management and access control by guests and employees
- **BACKUP System** in order to issue new credentials for new guests in case of computer problems
- **HOSTEL Option**, for shared use of rooms by different guests, with independent check-in and check-out dates
- **MOTEL Option**, limiting the use of the lock by hours
- Direct access to the on-line assistance website
- **REVALIDATOR**: Our system is capable of managing credentials by the hour or day/s. After the indicated period, it is necessary to revalidate their user permissions with the OMNITEC Revalidator in order for the card to continue to be operational. The device can be installed in a door or controlled passage by which, at the same time it revalidates the user permissions, it grants access to the user, speeding up and securing the process and the security of the hotel to the utmost

SIMPLEX SYSTEM

At OMNITEC we have small establishments in mind, offering them the advantages of the traditional key, plus the advantages of security, ease and peace of mind of the electronic lock with proximity card.

SIMPLEX functionality and efficiency:

- Does not require either PC or Access Management Software
- Cards are supplied which, simply by passing them near the desired locks, connect and link to them
- Allows subsequent migration to Access Management Software without having to change the locks

Electronic locks

OMNITEC is in a constant process of R&D&I. As a result of all the work and experience applied to locks, **4 new models of Mifare proximity electronic lock** have been added to the range: 3 Free Turn models and 1 Fit-In model.



FREE TURN

The **OMNITEC Free Turn** locks incorporate a mechanical mortise lock with mechanical parts manufactured in stainless steel and are equipped with:

- Silent latch
- System of freely rotating lever in closed situation
- Anti-panic function, to guarantee emergency exits
- Anti-card device, to prevent undesired entries



features

- System of opening with MIFARE proximity 13.56 Mhz.
- Guaranteed operation in the most adverse climatological environments, thanks to its manufacture of stainless steel AISI 304 and its tropicalized electronics
- With visual and acoustic indicators to facilitate their use by disabled persons, as well as for additional functionalities such as low battery warnings to personnel, privacy indicator, etc.
- Electromechanical privacy function with exterior visual indicator to prevent entries of unauthorized persons
- Includes NON-volatile EPROM which even when batteries are changed, allows the conservation of the last 400 openings, with information of user, date and time
- Equipped with real-time clock, which facilitates the management of any of the entries by personnel and guests.
- It has a hidden mechanical cylinder, for auditable emergency openings
- Operates with 4 standard AA batteries with a duration of up to 20,000 openings
- Configuration and auditing of the locks with wireless control unit
- Free Turn with EURO mechanics as standard. ANSI mechanics available with fixed handle

FIT-IN

The lock that adapts

OMNITEC offers the ideal solution for all those installations that want to incorporate, at minimum cost, a totally flexible, advanced, secure and effective access control technology.

With the incorporation of a new system of plates and levers, **OMNITEC** makes it possible to maintain existing mortise locks and enjoy all the functionalities of the GAUDI 2 lock.

Fit-In complements the traditional key system, equipping it with access control functions. It likewise allows updating of the obsolete and insecure magnetic band, chip or RFID systems.



The new locks differ mainly in their designs, comprising a range that covers the needs detected in the more than 50 countries where OMNITEC is present.



FREE TURN •

GAUDI 2

Renewed version of the **electronic proximity lock** with the best quality/price ratio on the market. **Sober, robust and easy to install**, in addition to its renewed design, it incorporates wireless communication with the management control unit.

KERIA

Carefully and elegantly designed in stainless steel for this new model of lock, with plate in rounded lines and narrow profile, much in demand by designers and hotel owners. Its design, ease of installation and easy management with a **wireless control** unit are winning over designers and hotels.

INDA

A **minimalist lock with independent reader, lever and mechanical lock**. The reduced design of the reader and the floating effect of the three elements provide **additional modernity and lightness** to the door of the room and to the whole corridor. Ina is managed with a wireless control unit to speed up operations.

FIT-IN 2

A **renewed design** for the consolidated OMNITEC Fit-In model. Renewing mechanical, magnetic band, chip or RFID locks is easy and fast with Fit-In. Maintaining the existing mortise, **Fit-In adapts to its installation** and provides the ease and security of Mifare electronic locks.



finishes

 Natural Stainless Steel AISI 304

 Gold Stainless Steel AISI 304

 Black Stainless Steel AISI 304

 White Stainless Steel AISI 304

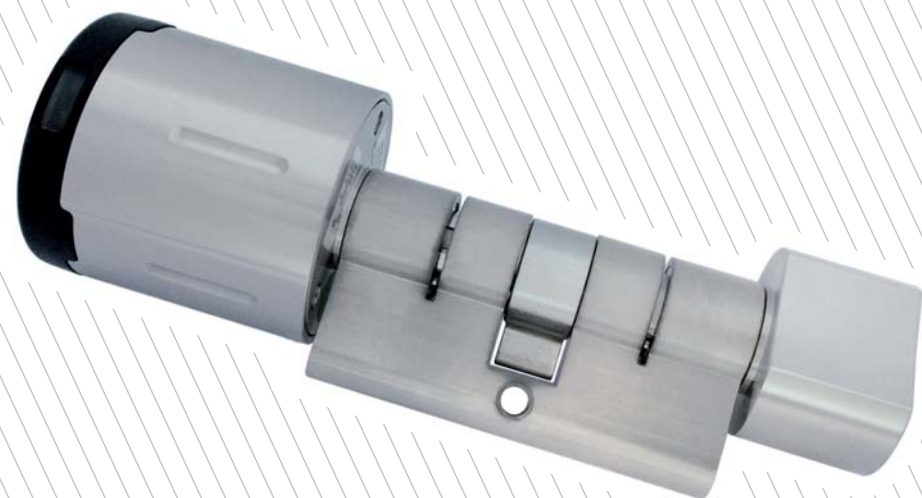


X-Clusive electronic cylinder

The OMNITEC X-Clusive Electronic Cylinder is the best option for modernizing doors with mechanical lock, which gives a modern and state-of-the-art dimension to the room, whether hotel or office.

The installation of the electronic cylinder modernizes the opening of doors, incorporating **wireless Mifare cards**, providing security and control to the entrances to these rooms.

Easy to install and to adapt to any type of previous lock or obsolete technologies, it is only necessary to disassemble the old lock and install the X-Clusive electronic cylinder.



features

- Battery power supply of 3.6 Volts
- Low-consumption device, with a battery useful life of approximately 30,000 openings.
- With the battery at minimum level, the device guarantees at least 100 openings before exhausted.
- Protection IP56

Lift control unit

The OMNITEC lift control unit has been designed to integrate into the management panels of the lift and increase the security of your hotel. With the lift control unit, the guest can only access to the floors with granted permissions.

With the relevant credentials on the MiFare card, the hotel will be able to limit the general use of the lift or even limit access to specific floors.

The system operates off-line and enables an increase in the security level of the hotel. The device manages access to the floors depending on the credentials of the guest's or employee's card, making it possible to limit access to specific floors or limit the operation of the panel buttons.

With a modern and minimized design, it is installed with minimal intervention on the lift panel.



Access Controls

OMNITEC offers a range of access controls, for indoor or outdoor use, that are easy to install, with the possibility of providing them with online functionalities to increase users' security and control.



COMPACT MODEL

Discreet, elegant and functional.

In the Compact model, both the MiFare card reader and the control unit have been integrated into a single device of easy installation.

It includes an anti-humidity rubber gasket to be used in those zones that need it.



DUAL COMPACT MODEL

Mifare access control, modern, versatile and easy to install.

Optionally, this model allows installing the reader and the control unit separated up to 120 mm, for additional anti-vandal security.



ANTI-VANDAL MODEL

The OMNITEC anti-vandal access control is a **guarantee of maximum security** in the hotel. With the independent reader unit and control unit, undesired entries are prevented, due to the impossibility of tampering with the controller.

The additional security is provided by the location of the control unit, which is installed in a controlled zone by hotel personnel, distant from the reader unit. With this structure, no one from outside the hotel can tamper with the control unit.

A control unit can manage up to 4 readers simultaneously and has a 12V battery integrated to guarantee the continuity of operation of the system in the event of possible electrical power cuts.

The TCP/IP standalone access controls are designed to be installed into a network, for both outdoor and indoor installation due to the protection provided by the encapsulation of the electronics. These access controls manage a minimum of 512 users and 2000 events.

The credentials for the TCP/IP standalone access controls are managed with the Omnitec software via an internal network. When creating a card and/or PIN, it is automatically registered and unregistered on the established dates. Access mode can be configured as MiFare card, numerical code or by a combination of both: card + code.

In case of network failure or connection loss with the server, the devices have internal memory to store user credentials and continue operating in off-line mode without users being affected.

For hotels that do not have overnight reception, it is possible to create a PIN for each booking and communicate it to the guest. Upon arrival, the guest enters the hotel with the received PIN and collects the keycard to the room from the assigned deposit box or safe.

STANDALONE MODEL

Equipped with a nice touch rubber keypad and plastic case.



REINFORCED STANDALONE MODEL

Built with internal metal case which protects the electronics and prevents undesired entries by unconventional means.



Electronic Locks for Lockers

OMNITEC offers a **simple, practical and secure** locker management system with the **E-locker** range of electronic locks.

OMNITEC electronic locks for lockers are the ideal solution for keeping the belongings of users and employees of health centers, spas, gyms, sports centers, education centers, company dressing rooms, etc. as well as in the usually shared room closets of hostels.



E-LOCKER MIFARE PLUS

Simple and fast installation in lockers and cabinets made from wood, sheet metal, plastic, phenolic, etc., thanks to its standard Euro size.

Discreet design, adaptable to doors with a thickness of up to 30mm.

Distinguishes 2 modes of operation:

- Owner: for lockers exclusively used by one person
- Allocation: the user uses the free locker that is available at any given time

Management system with internal software.



E-LOCKER MIFARE

Integration with **OMNITEC** locks, the **same card for the room and the locker**.

Fast installation in lockers and cabinets made from wood, sheet metal, plastic, phenolic, etc.

Distinguishes 2 modes of operation managed with **OMNITEC** software:

- Owner: with exclusive use by one person
- Allocation: the user uses the free locker that is available at any given time

The design is modern, simple and intuitive for the user.



E-LOCKER KEYPAD

Simple management, and without cards; operates by code.

Possibility of opening with magnetic button to simplify its use by employees.

Fast installation in lockers and cabinets made from wood, sheet metal, plastic, phenolic, etc.

Distinguishes 2 modes of operation:

- Owner: a code is pre-assigned for exclusive use by one person
- Allocation: the code is recorded on closing and is deleted after opening. The user uses the free locker that is available at any given time



Energy Savers

One of the priorities of **OMNITEC** is its commitment to the environment and to contributing to saving energy in hotels. The **OMNITEC** energy savers are devices that **allow up to 60% of the electrical consumption** of the buildings where they are installed to be saved.



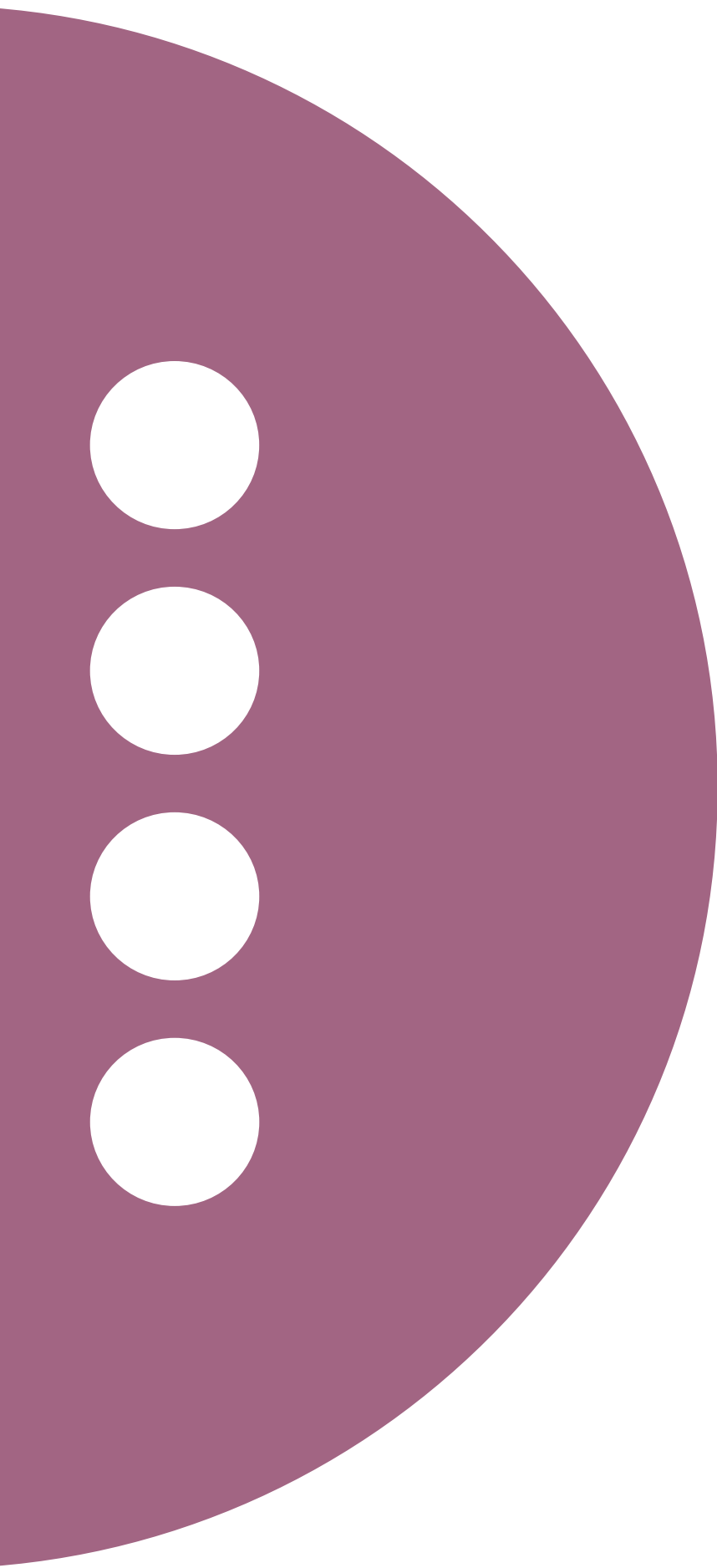
The installation of energy savers is recommended for hotels, aparthotels, residences, universities, public buildings, offices, etc.

- **Energy Saving:** the electricity deactivates on leaving the room, preventing the air conditioning, lighting and other electrical devices from remaining connected.
- **Comfort:** timed courtesy light with the option of controlling access to the minibar, telephone, water, etc.
- **Multi-application:** uses the same medium as the opening of the room, with or without reading of credentials, depending on the Smart or Simple model.
- **Connectivity:** the wireless model is the perfect solution when using smartphones, smartwatches or bracelets as means of access to the room. For these installations, **OMNITEC** offers a system with a presence sensor that detects if there is anyone in the room and in wireless mode, controls the energy saver that activates/deactivates the lighting, air conditioning, etc. The maximum level of efficiency is achieved if it is complemented with door and/or window sensors which allow discrimination of the use of air conditioning and lighting if they are opened or closed.



features

- Recessed and surface models
- LED Indicator
- Available in different colors
- Courtesy light 10 to 30 seconds
- Allows work with automated systems, energy management systems and lighting controls
- Current: 16A



Security and efficiency in access management

International Experience



REFERENCES



- | | |
|---|-------------------------------------|
| Design Hotel 11 Mirrors 5* Ukraine | Zheneva Truskavets 5* Ukraine |
| Catalonia Royal Tulum 5* Mexico | The Bocardo Hotel 5* United Kingdom |
| Mercure Porte Versailles 4* France | Mainport Hotel 5* Nederland |
| Sofitel Luxembourg Europe 5* Luxembourg | One Resort Monastir 4* Tunisia |
| Hotel Eden Ardenne 3* Belgium | Finest Isla Mujeres 5* Mexico |
| Barceló Torre de Madrid 4* Spain | Hotel Wissal 4* Mauritania |
| Sol Phu Quoc 4* Vietnam | Hotel Colbert 4* Madagascar |

look for more references in our website

